

annual report

FY'23

keeping older adults in central Arkansas

HAPPY. HEALTHY. HOME.

delivering health, comfort & hope

MEALS ON WHEELS

"I DON'T HAVE TO WORRY ABOUT WHERE MY NEXT MEAL IS COMING FROM. I LOVE CARELINK'S MEALS ON WHEELS – IT'S WONDERFUL."



This vital program is important to so many. Scan to learn more.

HEMOCARE

"THEY'RE VERY GOOD TO ME, AND THEY'VE BEEN A LOT OF HELP. [KRISTEN], SHE'S MY RIGHT-HAND MAN...SHE'S INDISPENSABLE."



Learn more about Francis' journey & how CareLink helps her age at home.



FAMILY CAREGIVER SERVICES

"I DIDN'T KNOW I COULD GET SOMETHING TO HELP ME, AND WHEN I DID, I DIDN'T HAVE TO GO TO MY NEIGHBORS TO CRY. TO GET SOME OF YOUR LIFE BACK – IT WAS LIKE A NEW WORLD TO ME."



Scan to hear the rest of Denita's story & her experience with CareLink.



highlights²³

service & program delivery FY23

HOMEBOUND SERVICES

HomeCare	hours	278,896
Meals on Wheels	meals	598,651
Telephone Reassurance	calls	46,339
Targeted Case Management	hours	2,677
Urgent Needs	cases	65
Transportation	one-way trips	57,191

SERVICES FOR ACTIVE OLDER PEOPLE

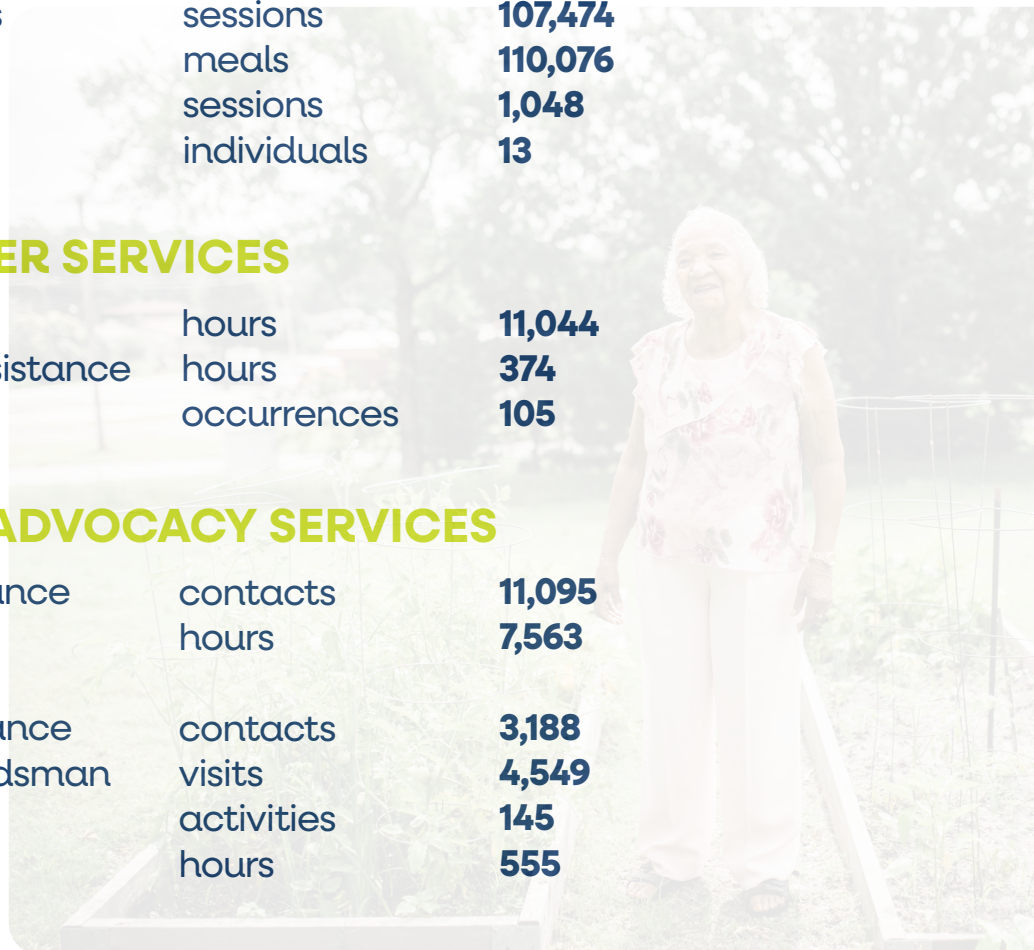
Senior Center Activities	sessions	107,474
Senior Center Meals	meals	110,076
Health Promotion	sessions	1,048
Senior Employment	individuals	13

FAMILY CAREGIVER SERVICES

In-Home Respite	hours	11,044
Case Management Assistance	hours	374
Supplemental Services	occurrences	105

OUTREACH AND ADVOCACY SERVICES

Information and Assistance	contacts	11,095
Client Representation	hours	7,563
Medicare/Medicaid		
Enrollment Assistance	contacts	3,188
Long-Term Care Ombudsman	visits	4,549
Outreach	activities	145
Legal Assistance	hours	555



YEAR IN REVIEW



SUPPORT AND REVENUE:

Fee for service and contracts	\$6,461,474
Federal and state grants	\$8,564,217
Contributions, donated services & facilities	\$598,686
Other revenue	\$126,301

TOTAL SUPPORT AND REVENUE	\$15,750,678
----------------------------------	---------------------

EXPENSES:

Program Services

Homebound services	\$10,733,732
Services for active older people	\$1,932,570
Outreach and advocacy services	\$1,042,623
Family caregiver services	\$336,459
Total Program Services	\$14,045,384

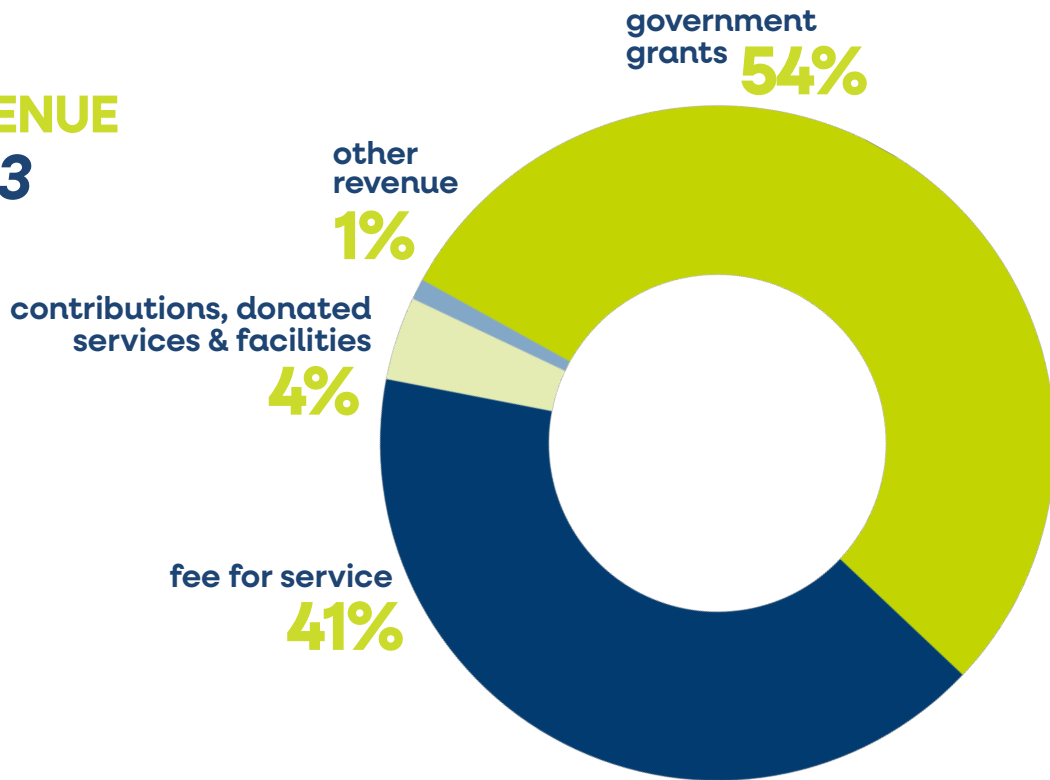
Support Services

General and administrative	\$1,529,631
Fundraising	\$361,849
Total Support Services	\$1,891,480

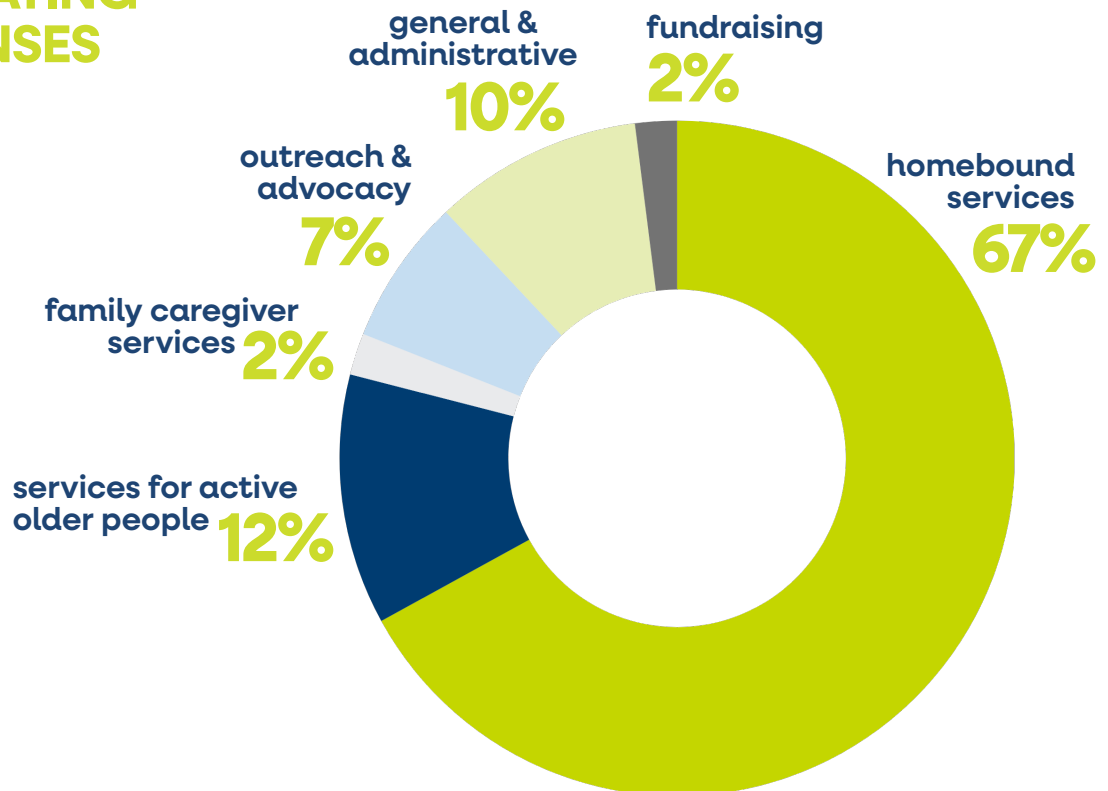
TOTAL EXPENSES	\$15,936,864
-----------------------	---------------------

FY23 FINANCIALS

REVENUE FY23



OPERATING EXPENSES FY23



ABOUT US

mission

To connect older people and their families with resources to meet the opportunities and challenges of aging.



WHO WE ARE

CareLink is a nonprofit that has been serving older people and their families in central Arkansas for 43 years by connecting them with the resources they need to meet the challenges and opportunities of aging. We aim to provide the utmost care so that seniors can maintain independence and are able to stay at home.

WHAT WE DO

At CareLink, we help homebound older people receive services that allow them to stay at home as long as possible, avoiding more costly care. We help active older people stay fit, healthy and involved through senior centers, wellness programs and volunteer opportunities and we help family caregivers navigate the maze of available services and care for their aging loved ones.



HOW YOU CAN HELP

As a nonprofit, CareLink depends on community support to continue serving a growing population of older people in central Arkansas. We are proud of the conscientious way in which we use our funds and grateful for your trust to be good stewards of your investment. 100% of your donation goes to the program of your choice.

ways to give



BECOME A VOLUNTEER

Deliver meals, volunteer in senior centers, provide companionship.

Learn more:
carelink.org/volunteer



SPONSOR OPPORTUNITIES

Become a corporate or individual sponsor for specific programs or an event.

Learn more:
carelink.org/meet-the-corporate-sponsors



MAKE A GIFT

Make a one-time or monthly gift to help ensure our work continues.

Learn more:
carelink.org/give-now/

For media & press inquiries: mgilbert@carelink.org
For giving opportunities & donation inquiries: bsellers@carelink.org
For program & partnership inquiries: rmetcalf@carelink.org